

REGIONAL WATER ISSUES

Advancing Water Abundance & Reliability

April 3, 2025

Regional Water Issues



Advancing Abundance, Reliability

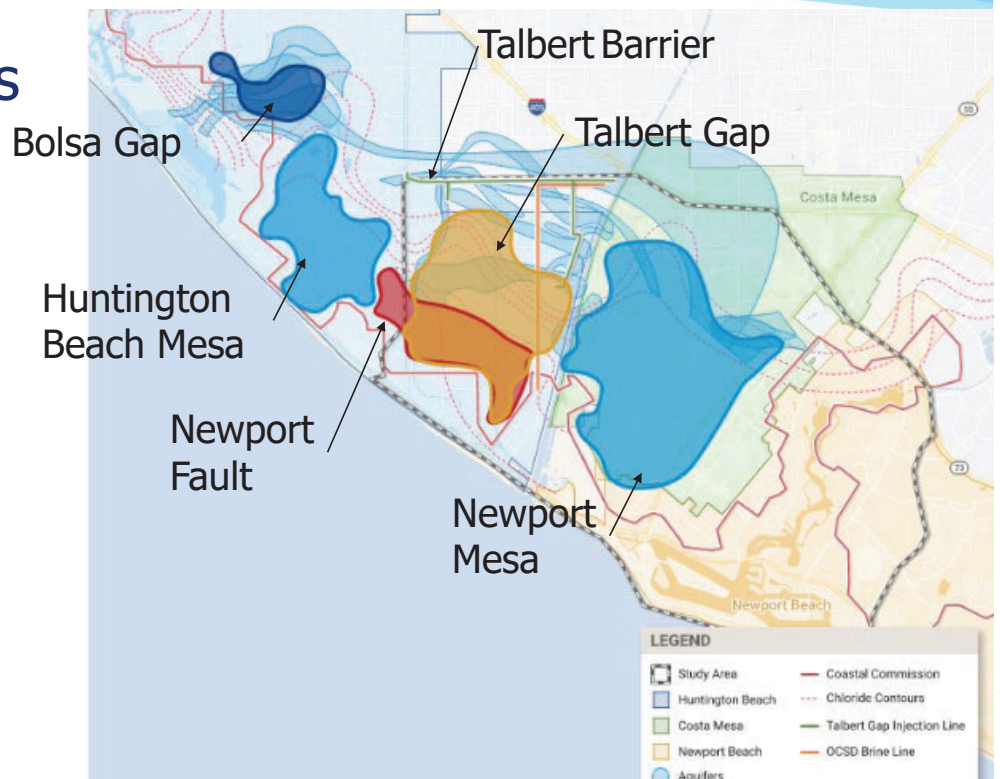
- Local SIP
- Interagency Water Transfer
- Water Use Efficiency
- Proposition 218
- Groundwater Basin Emergency Interconnection Project

LOCAL SIP

Feasibility Study of Brackish Groundwater Desalination

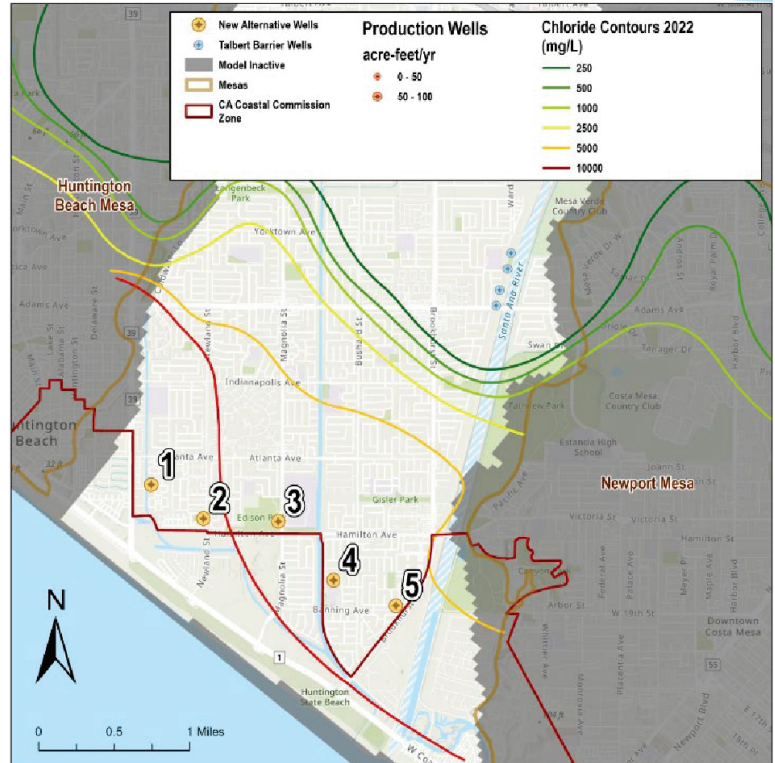
April 3, 2025

Wellfield Locations



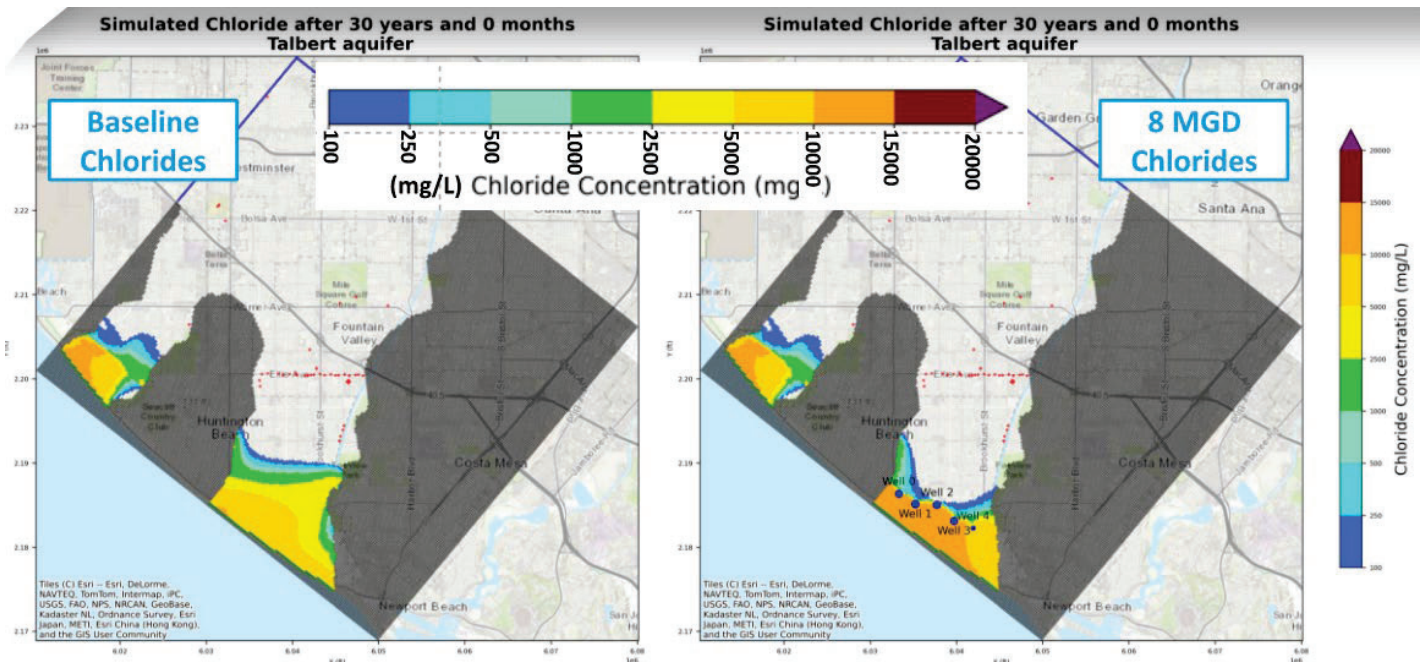
Simulated Well Locations

- Evenly distributed well from Atlanta Ave. to Brookhurst
- Close to coastal zone
- Wells screened in Talbert Aquifer



5 | April 3, 2025

Groundwater Modeling Results



6

Groundwater Modeling Results

- 70 – 80% of water from ocean
- 20 – 30% from OC Basin/Barrier
- 9,000 mg/L Chloride (18,000 mg/L)
- 4 to 8 mgd well production (2 to 5 mgd product water)

Project Alternatives

Alternative 1

- 4 MGD influent
- 2.61 MGD finished water

Alternative 2

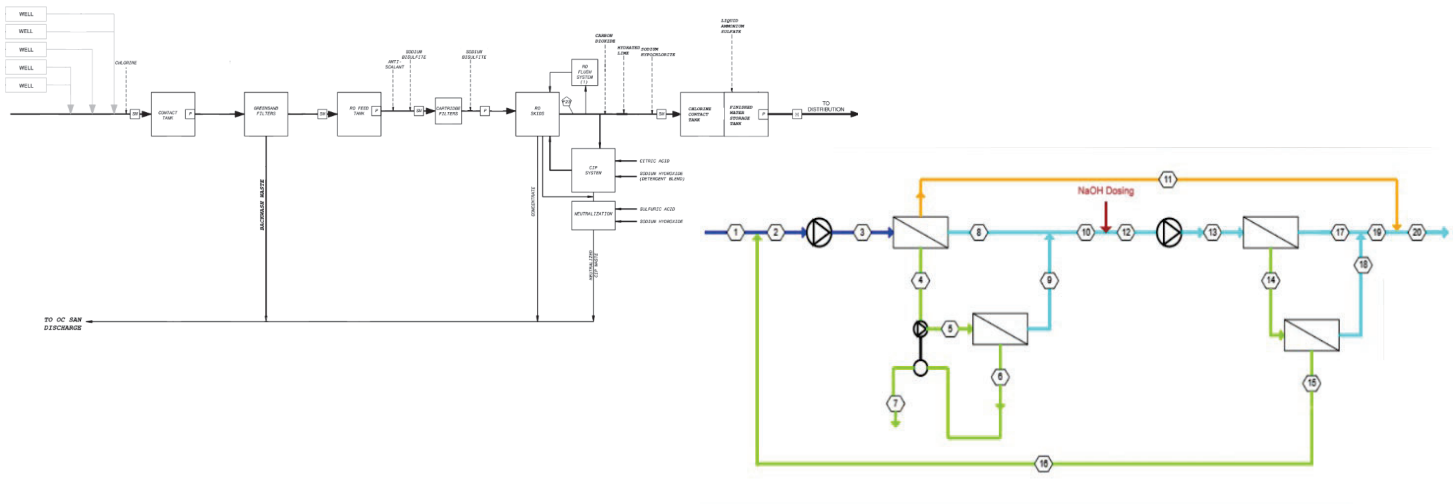
- 8 MGD influent
- 5.22 MGD finished Water

Alternative 3

- No project alternative

- Same treatment process flow diagram
- Same WQ assumptions
- Different Influent Flows
- Both assume 66% RO Recovery

Preliminary Treatment Train Development



9 | April 3, 2025



Next Steps

- Develop capital and operational costs for 4 and 8 mgd alternatives

No.	Potential Meeting Topics
1	Groundwater Modeling Approach
2	Present Proposed Wellfield Locations
3	Modeling Task On Hold and Site Selection Assessment
4	Model Calibration Update and Process Flow Diagram
5	Model Calibration Path Forward
6	Model Results and Select Source Water
7	Select Source Water
8	Present Alternatives and Treatment Alternatives
9	Present Proposed Alternative and Cost Evaluation
10	Present Economic Analysis and Proposed Project

10 | April 3, 2025

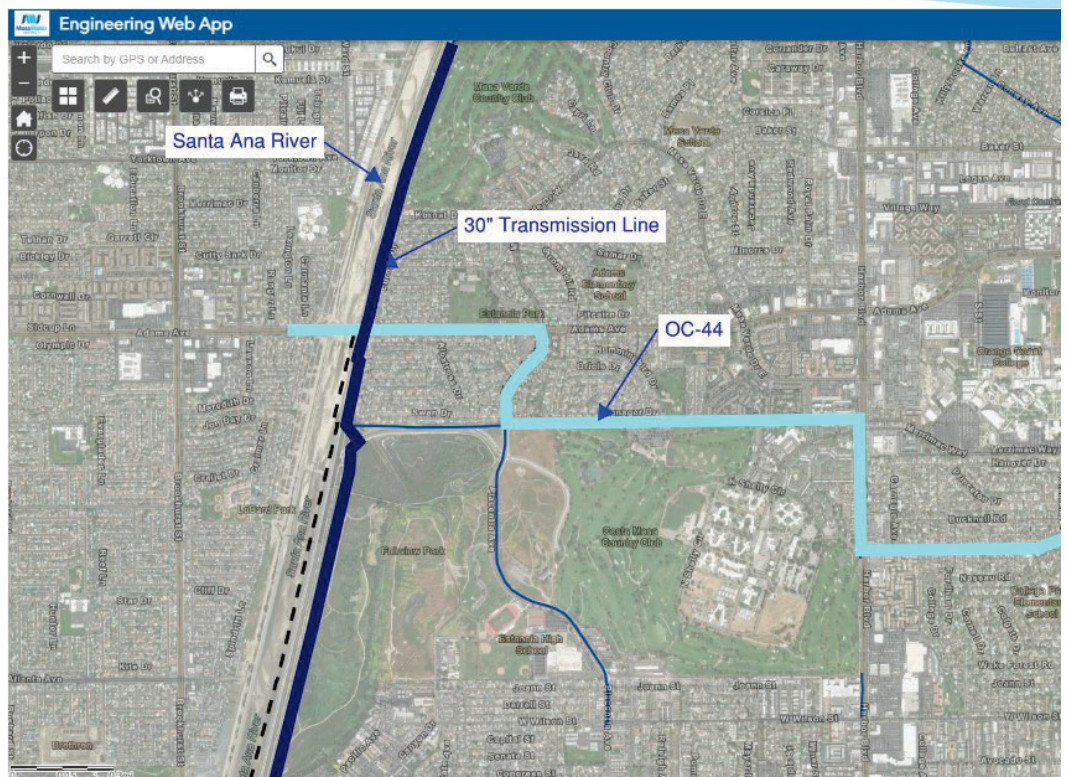


INTERAGENCY WATER TRANSFER

Mesa Water & City of Huntington Beach Collaboration

April 3, 2025

Interagency Water Transfer



Scope of Work

Water Supply and Demand Assessment

Infrastructure Assessment

Regulatory and Environmental Considerations

Cost Analysis

Risk Assessment

Feasibility Assessment

13 | April 3, 2025



Next Steps

1. Finalize Scope of Work – Complete
2. RFP for Consultant – April 2025
3. Develop Feasibility Study – Fall 2025

14 | April 3, 2025

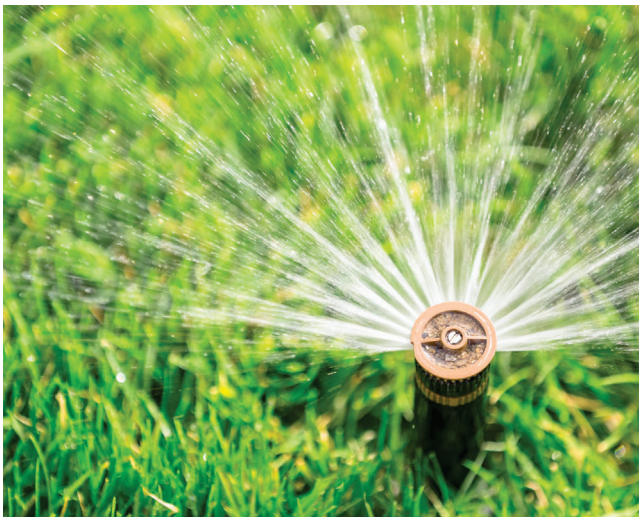


WATER USE EFFICIENCY

Making Conservation a California Way of Life Regulation

April 3, 2025

Water Use Efficiency ("WUE")

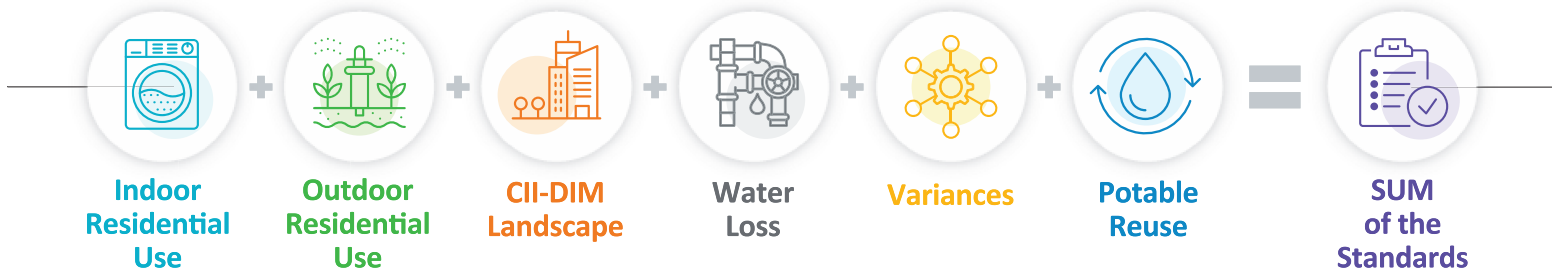


Making Conservation a California
Way of Life Regulation

- WUE Objective
- WUE Compliance, Implementation
 - Data
 - Reporting
 - Resources
 - Timing
 - Variances (Potable Reuse, etc.)

The Water Use Objective Calculation

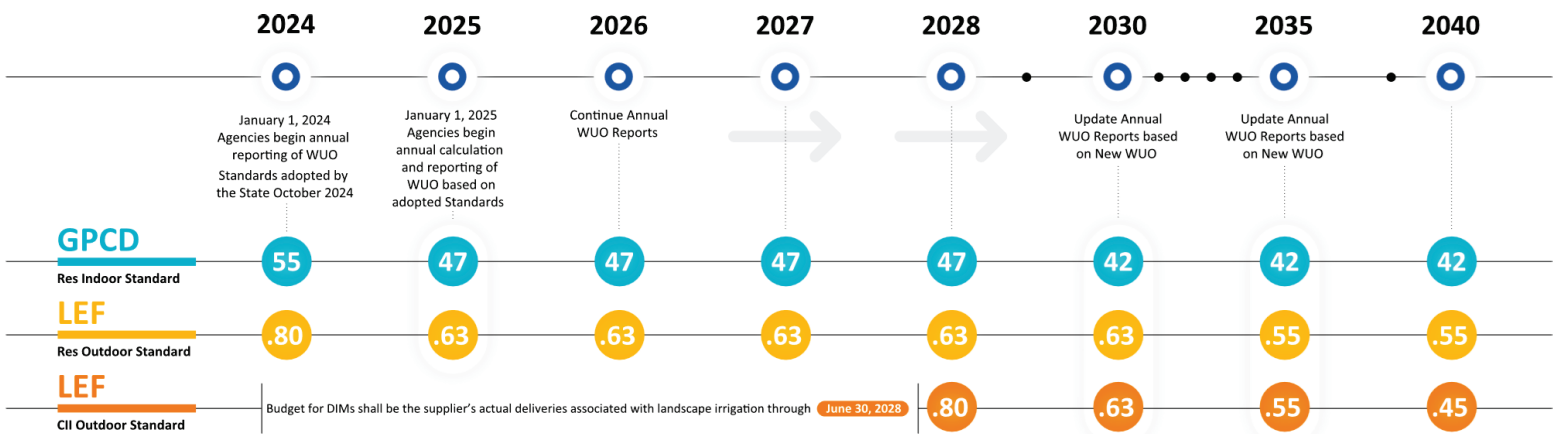
Providers will need to meet the **SUM** of the standards:



17 | April 3, 2025

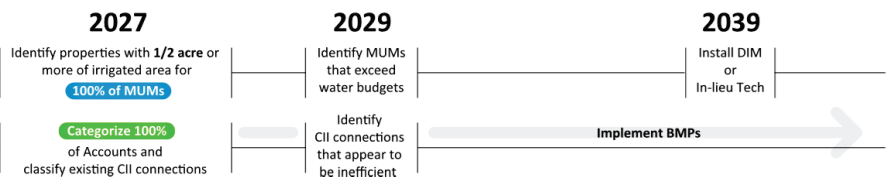


Water Use Objective Schedule



CII Performance Measures

MUMs



CII Accounts



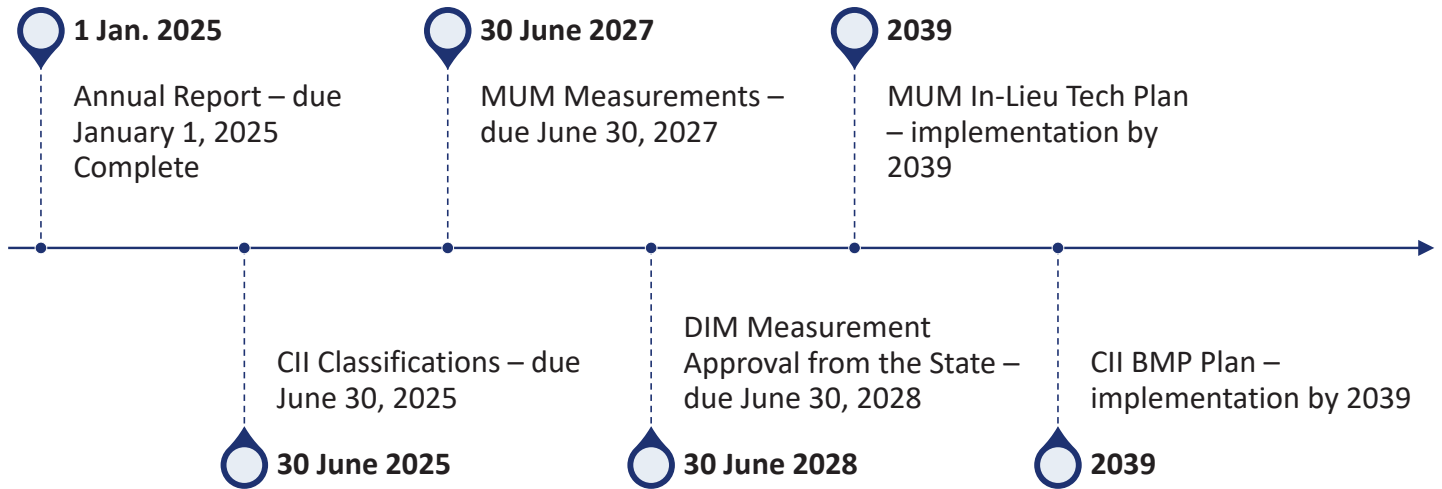
Water Use Objective Schedule

2024 Standard; 55 GPCD; 0.80 LEF

Water Use Component	Actual (Acre-Feet)	WUO (Acre-Feet)	Amount Under/Over
Total Residential Water Use, Indoor + Outdoor	9,210	9,175	35
Outdoor Irrigation of CII landscapes associated with DIMs	1,185	1,185	0
System Water Loss	284	479	-195
Variances, Provisions, and 20% INI buffer, if applicable	-	-	0
Bonus Incentive*	-	1,626	-1,626
Sum of Water Use Objective	10,679	12,465	-1,786



Next Steps



PROPOSITION 218

Recent Prop 218 Legal Judgements

April 3, 2025

Proposition 218



Amicus Engagement

- Appeal rulings for taxpayers (precedent)
 - Capistrano Taxpayers Ass'n, Inc. v. City of San Juan Capistrano
 - Coziahr v. Otay Water District
- Appeal rulings TBD
 - Patz v. City of San Diego

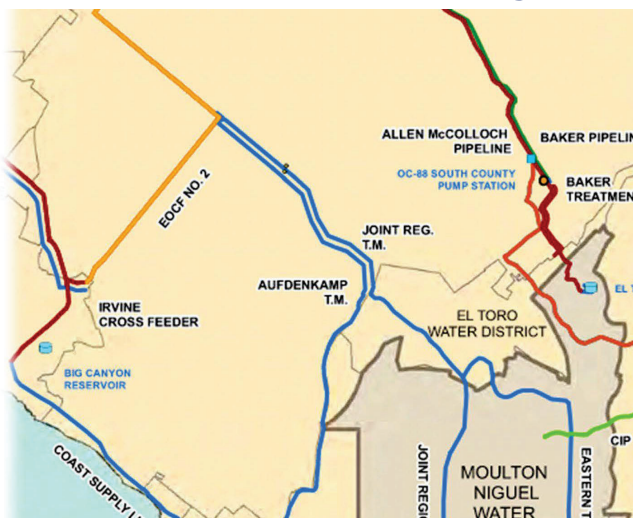
Outreach/Education

- Presentations; ACWA Conference

GROUNDWATER BASIN EMERGENCY INTERCONNECTION PROJECT

April 3, 2025

GW Basin Emergency Interconnection Project



Overview

- Current Agreement Summary
- Issues
 - Policy Considerations
 - Other Considerations
- Next Steps, Timing



QUESTIONS?



THANK YOU!