

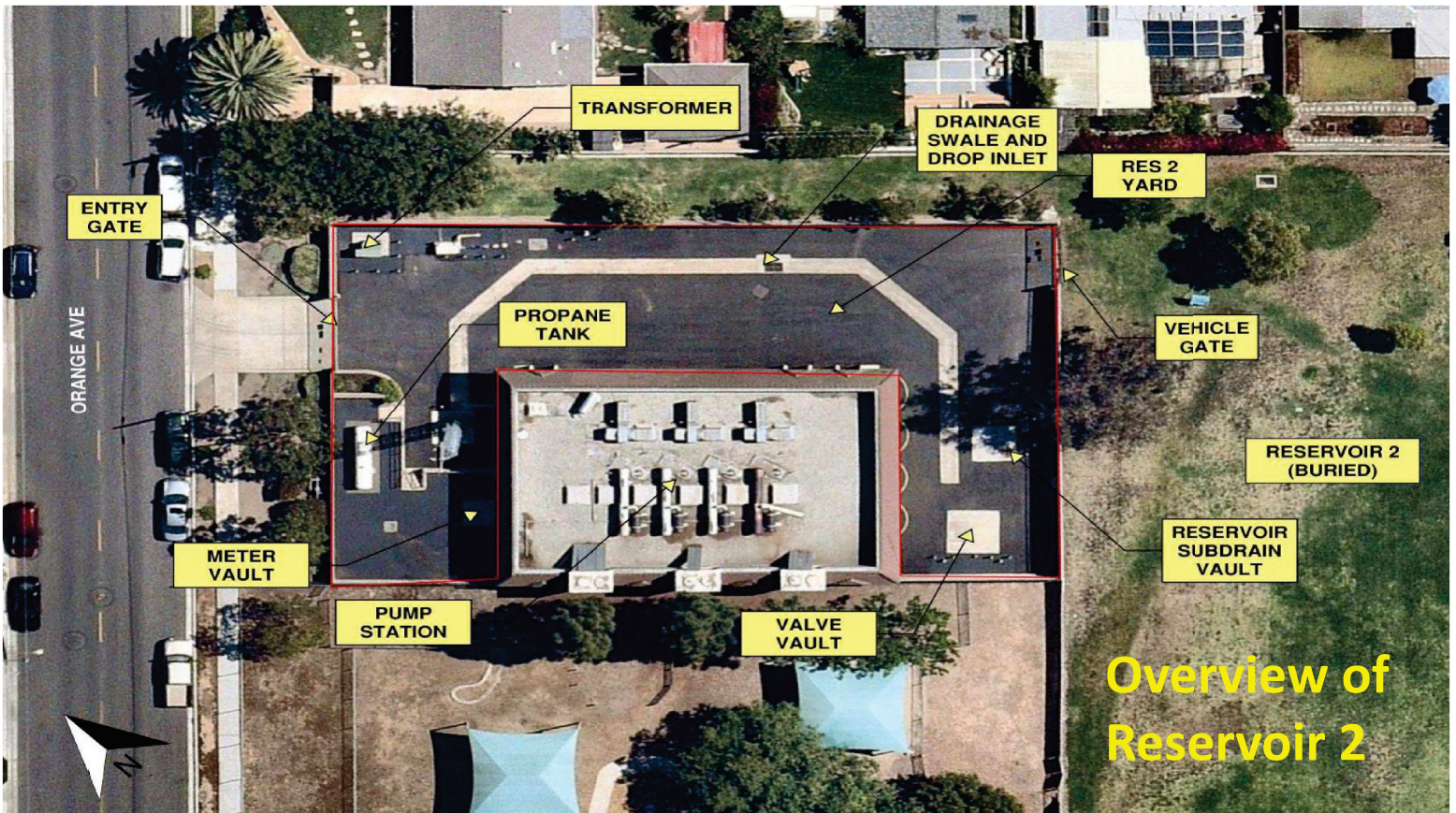


Presentation and Discussion Item 7

RESERVOIRS 1 AND 2 PUMP STATION UPGRADES PROJECT - COMMUNITY OUTREACH



June 26, 2024



Reservoir 2 Upgrades

- Replace pumps and motors
- Rehabilitate/replace pumping systems, infrastructure
- Construct new reservoir management facility
- Completion by Summer 2025

3 | June 26, 2024



Reservoir 2 Location & Neighbors



- Located at 2340 Orange Avenue
- Next door to NMUSD's Special Education administration site
- Next to Catalyst Kids Daycare & Preschool
- Behind Lindbergh Park

4 | June 26, 2024



Potential Impacts

- History with the neighborhood during construction
- Traffic, access to driveways, streets and parking, and work hours
- Visual impact (for residents)
- Use of and delivery of construction equipment including tall cranes
- Typical question topics:
 - Water service interruptions
 - Traffic during school drop off and pick up
 - Safety around construction site
 - Noise, vibration, dust, hazardous materials, odor

Completed Construction Outreach

- ✓ Briefing with NMUSD Special Education Administration office
- ✓ Briefing with Catalyst Kids director
- ✓ Conducted door-to-door construction alert canvassing to 100 neighbors
- ✓ Briefing with NMUSD Facilities Administration staff
- ✓ Briefing with City Parks & Rec staff
- ✓ Attending weekly progress meetings

Look-Ahead Construction Outreach

- Door-to-door construction alert canvassing
- Neighborhood pop-ups
- Mesa Water Notify alerts

7 | June 26, 2024



What We've Heard From Our Neighbors



"Thank you for stopping by and letting us know about this project."

"I was living here when the reservoir was built."

"Our kids are excited to see what is happening at your site."

8 | June 26, 2024



Construction Outreach Team Contact



949.354.4278



ConstructionInfo@MesaWater.org

9 | June 26, 2024



QUESTIONS?

10 | June 26, 2024

